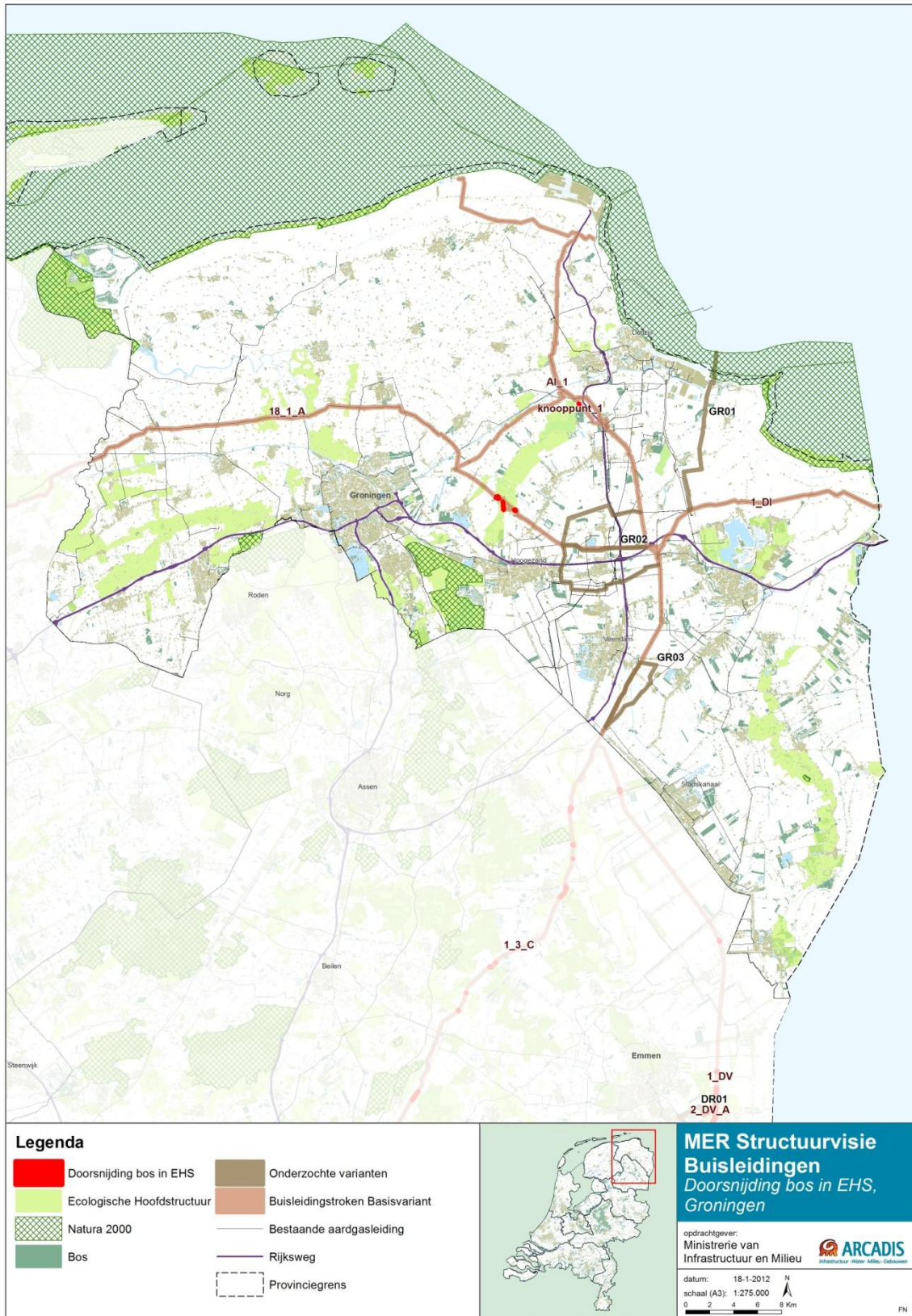


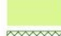





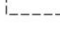


Bijlage 3 EHS-kaarten per provincie





Legenda

- | | | | |
|---|----------------------------|---|---------------------------------|
|  | Doorsnijding bos in EHS |  | Onderzochte varianten |
|  | Ecologische Hoofdstructuur |  | Buisleidingstroken Basisvariant |
|  | Natura 2000 |  | Bestaande aardgasleiding |
|  | Bos |  | Rijksweg |
| | |  | Provinciegrens |



**MER Structuurvisie
Buisleidingen**
*Doorsnijding bos in EHS,
Friesland*

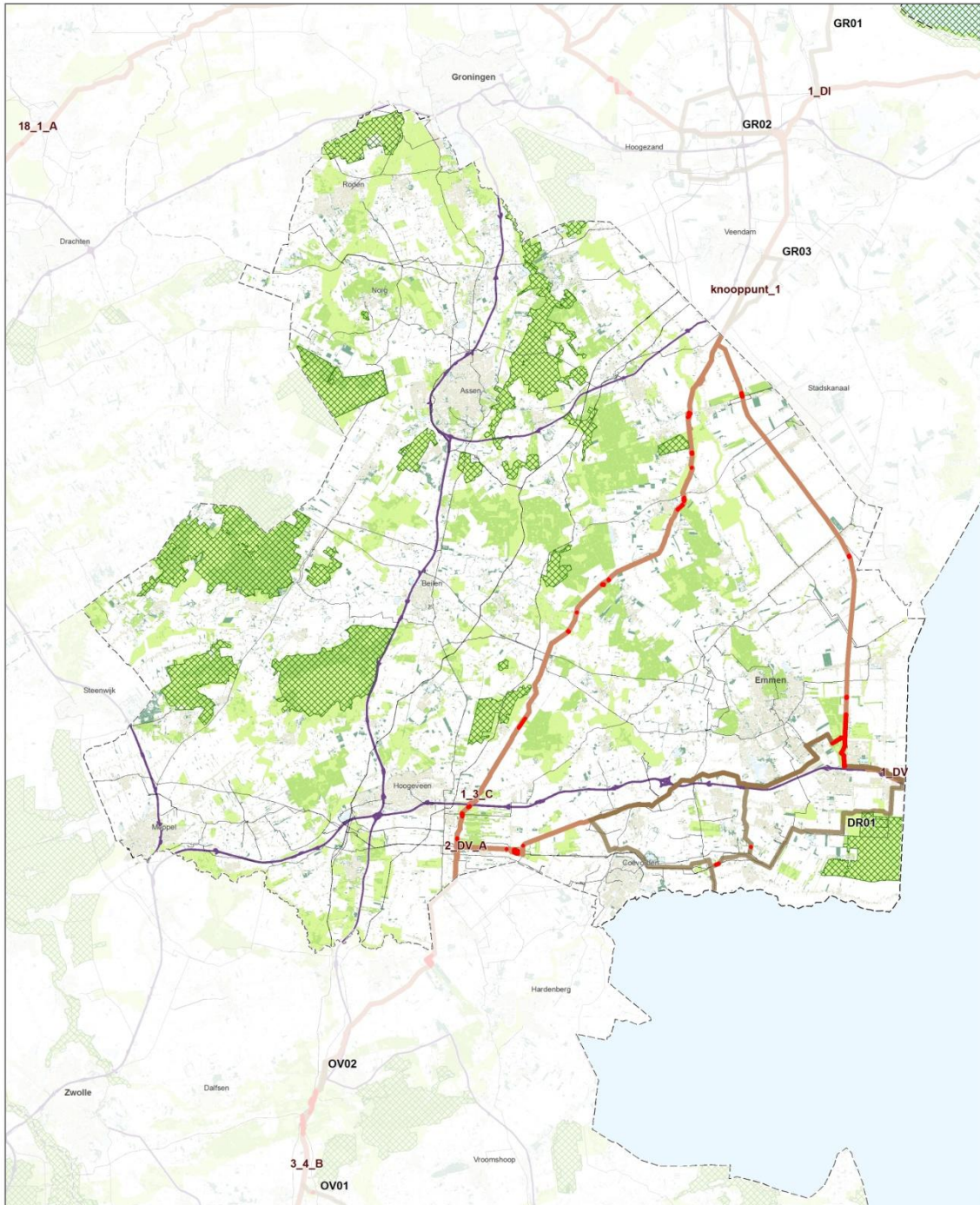
opdrachtgever:
Ministerie van
Infrastructuur en Milieu

 **ARCADIS**
Infrastructuur Water Milieu Gebouwen


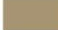







datum: 18-1-2012
schaal (A3): 1:275.000

 0 2 4 6 8 Km

FN



Legenda

- | | | | |
|---|----------------------------|---|---------------------------------|
|  | Doorsnijding bos in EHS |  | Onderzochte varianten |
|  | Natura 2000 |  | Buisleidingstroken Basisvariant |
|  | Ecologische Hoofdstructuur |  | Bestaande aardgasleiding |
|  | Bos |  | Rijksweg |
| | |  | Provinciegrens |



**MER Structuurvisie
Buisleidingen**
*Doorsnijding bos in EHS,
Drenthe*

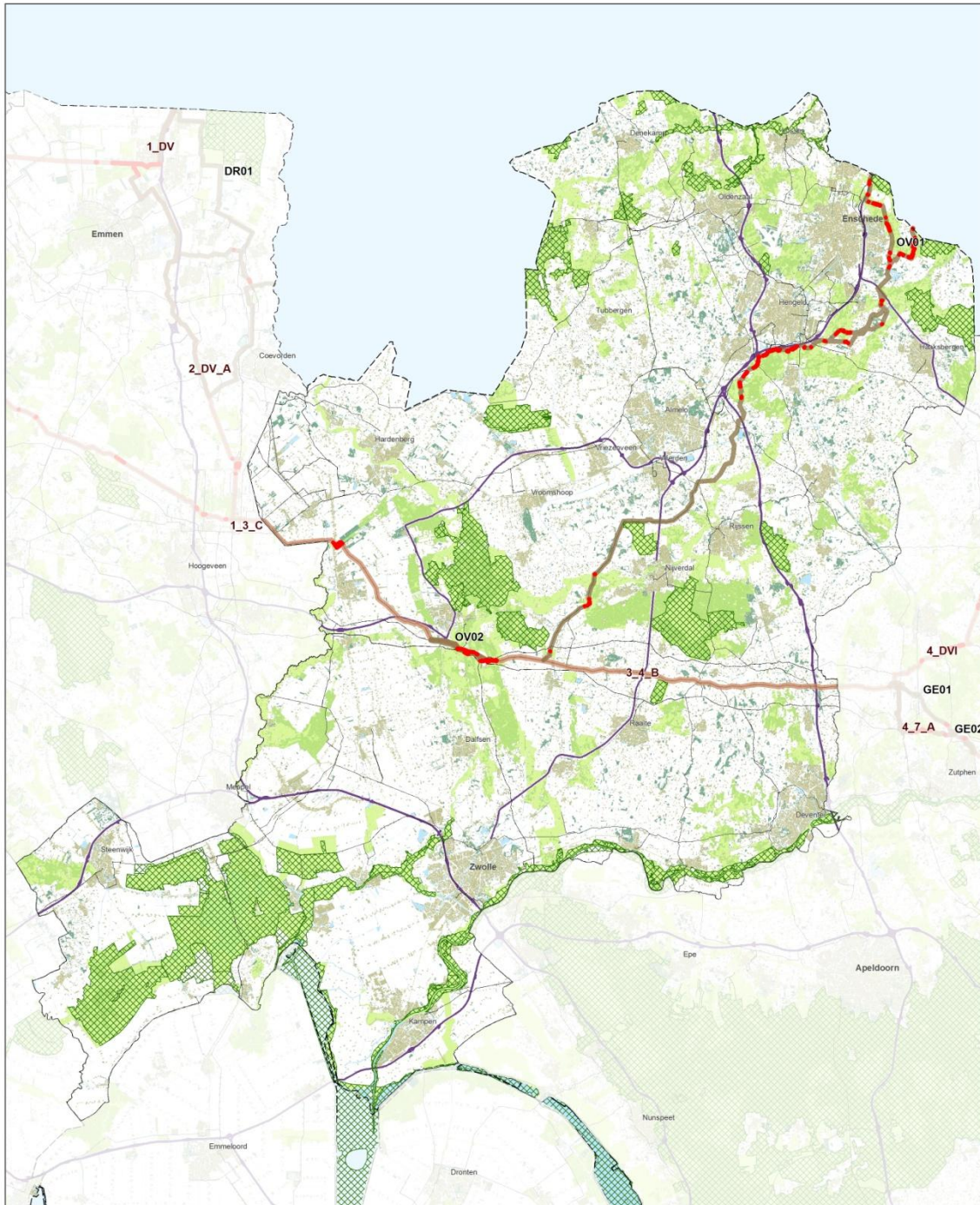
opdrachtgever:
Ministerie van
Infrastructuur en Milieu

 **ARCADIS**
Infrastructuur Water Milieu Cebocouren



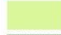






datum: 18-1-2012
schaal (A3): 1:275 000

0 2 4 6 8 Km

FN



Legenda

- | | | | |
|---|----------------------------|---|---------------------------------|
|  | Doorsnijding bos in EHS |  | Onderzochte varianten |
|  | Ecologische Hoofdstructuur |  | Buisleidingstroken Basisvariant |
|  | Natura 2000 |  | Bestaande aardgasleiding |
|  | Bos |  | Rijksweg |
| | |  | Provinciegrens |

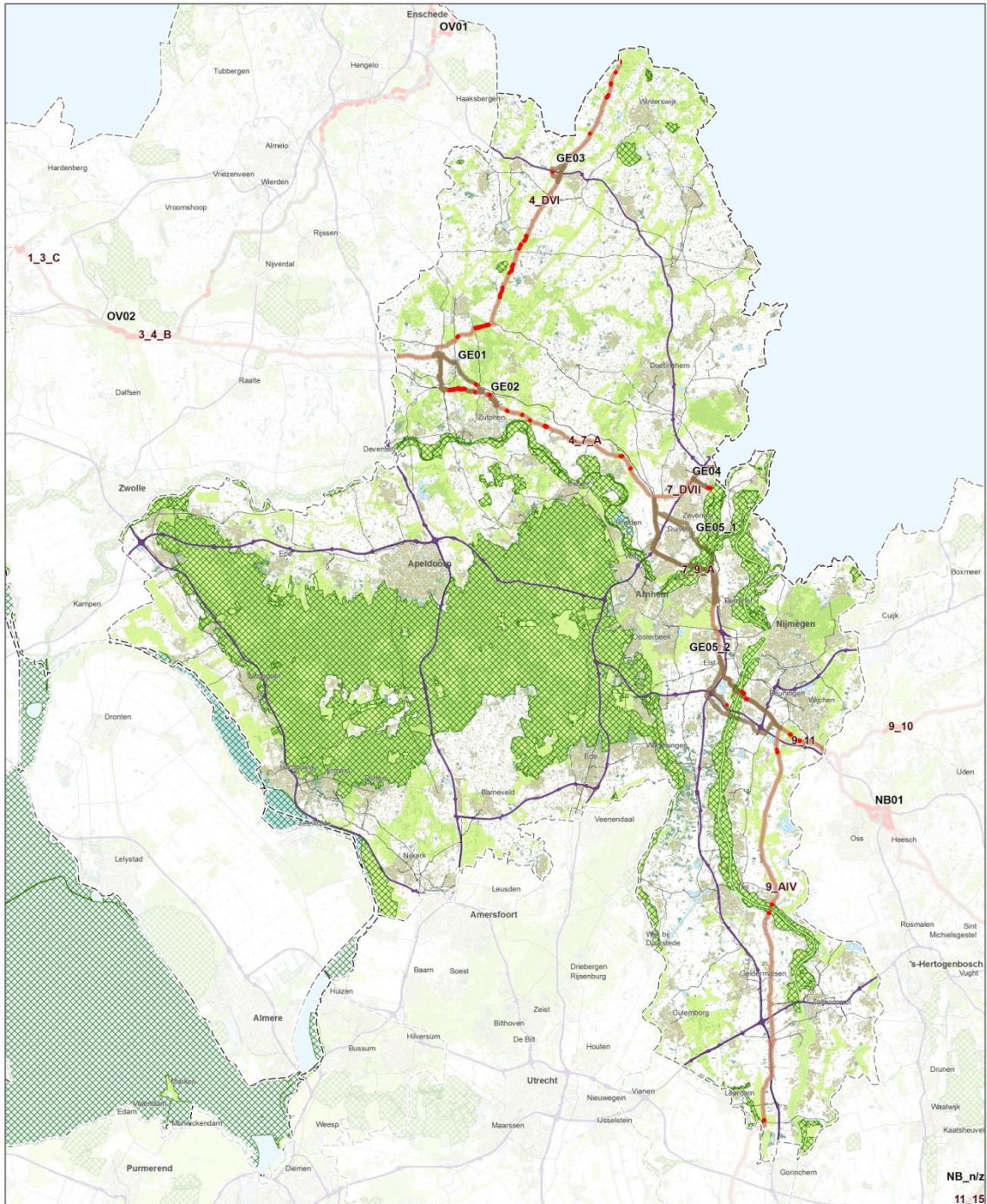


MER Structuurvisie
Buisleidingen
Doorsnijding bos in EHS, Overijssel

opdrachtgever:
 Ministerie van
 Infrastructuur en Milieu 
 Infrastructuur Water Milieu Gebouwen

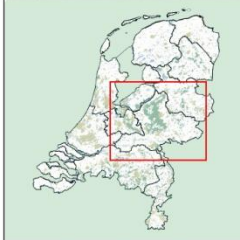
datum: 23-1-2012
 schaal (A3): 1:300 000 
 0 2 4 6 8 Km

FN



Legenda

	Doorsnijding bos in EHS		Onderzochte varianten
	Ecologische Hoofdstructuur		Buisleidingstroken Basisvariant
	Natura 2000		Bestaande aardgasleiding
	Bos		Rijksweg
			Provinciegrens



MER Structuurvisie
Buisleidingen
Doorsnijding bos in EHS, Gelderland

opdrachtgever:
 Ministerie van
 Infrastructuur en Milieu

ARCADIS
 Infrastructuur Water Milieu Gebouwen



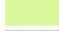






datum: 18-1-2012
 schaal (A3): 1:400 000

0 2 4 6 8 Km

FN



Legenda

- | | | | |
|---|----------------------------|---|---------------------------------|
|  | Doorsnijding bos in EHS |  | Onderzochte varianten |
|  | Ecologische Hoofdstructuur |  | Buisleidingstroken Basisvariant |
|  | Natura 2000 |  | Bestaande aardgasleiding |
|  | Bos |  | Rijksweg |
| | |  | Provinciegrens |



**MER Structuurvisie
Buisleidingen**
*Doorsnijding bos in EHS,
Noord-Holland*

opdrachtgever:
Ministerie van
Infrastructuur en Milieu


Infrastructuur Water Milieu Gebouwen

datum: 23-1-2012
schaal (A3): 1:250 000

 0 2 4 6 8 Km

FN



Legenda

- Doorsnijding bos in EHS
- Ecologische Hoofdstructuur
- Natura 2000
- Bos
- Onderzochte varianten
- Buisleidingstroken Basisvariant
- Bestaande aardgasleiding
- Rijksweg
- Provinciegrens



MER Structuurvisie Buisleidingen
Doorsnijding bos in EHS, Zuid-Holland

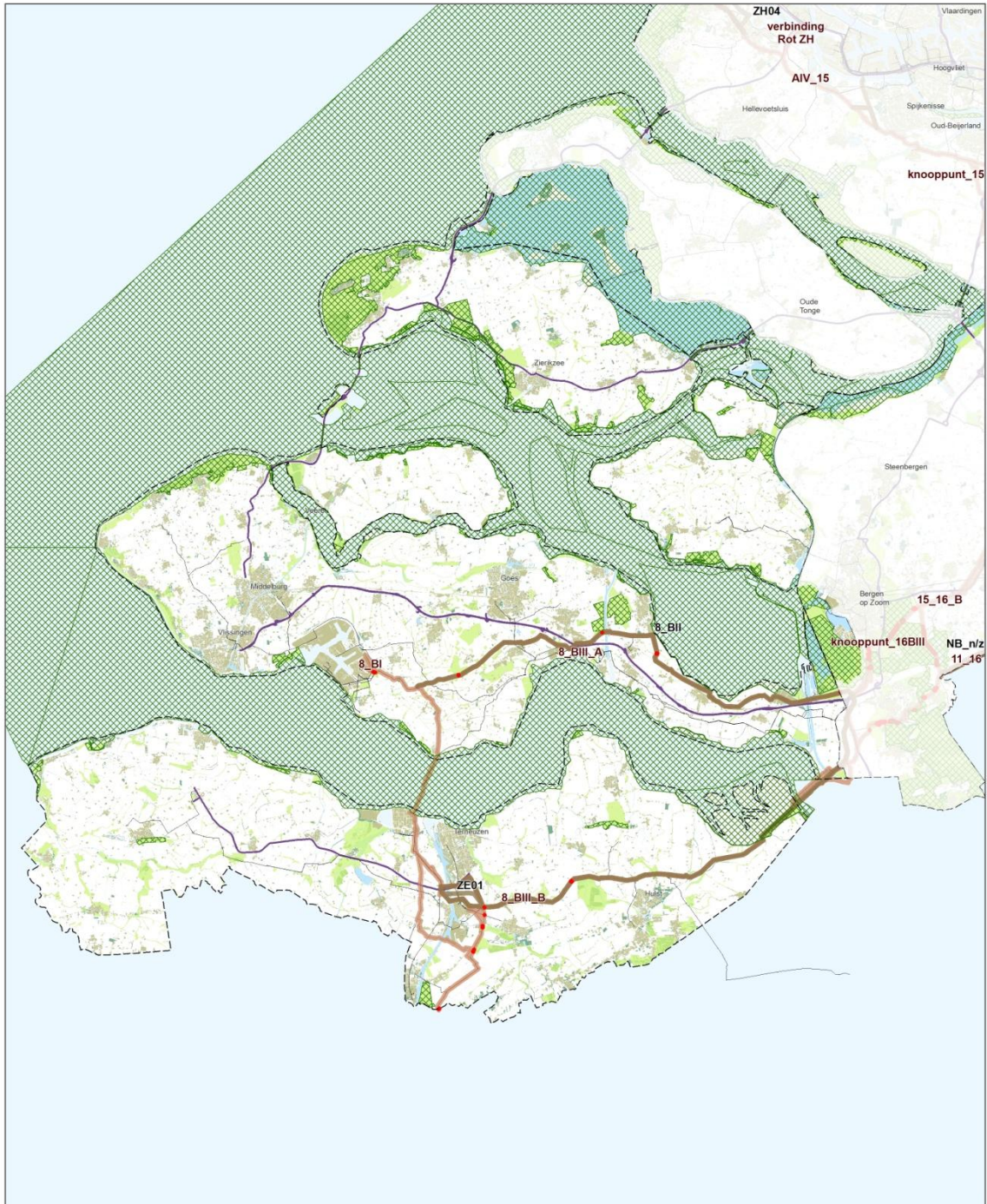
opdrachtgever:
 Ministerie van Infrastructuur en Milieu

ARCADIS
 Infrastructuur Water Milieu Gebouwen



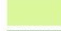






datum: 23-1-2012
 schaal (A3): 1:275 000

0 2 4 6 8 Km

FN



Legenda

- | | | | |
|---|----------------------------|---|---------------------------------|
|  | Doorsnijding bos in EHS |  | Onderzochte varianten |
|  | Ecologische Hoofdstructuur |  | Buisleidingstroken Basisvariant |
|  | Natura 2000 |  | Bestaande aardgasleiding |
|  | Bos |  | Rijksweg |
| | |  | Provinciegrens |

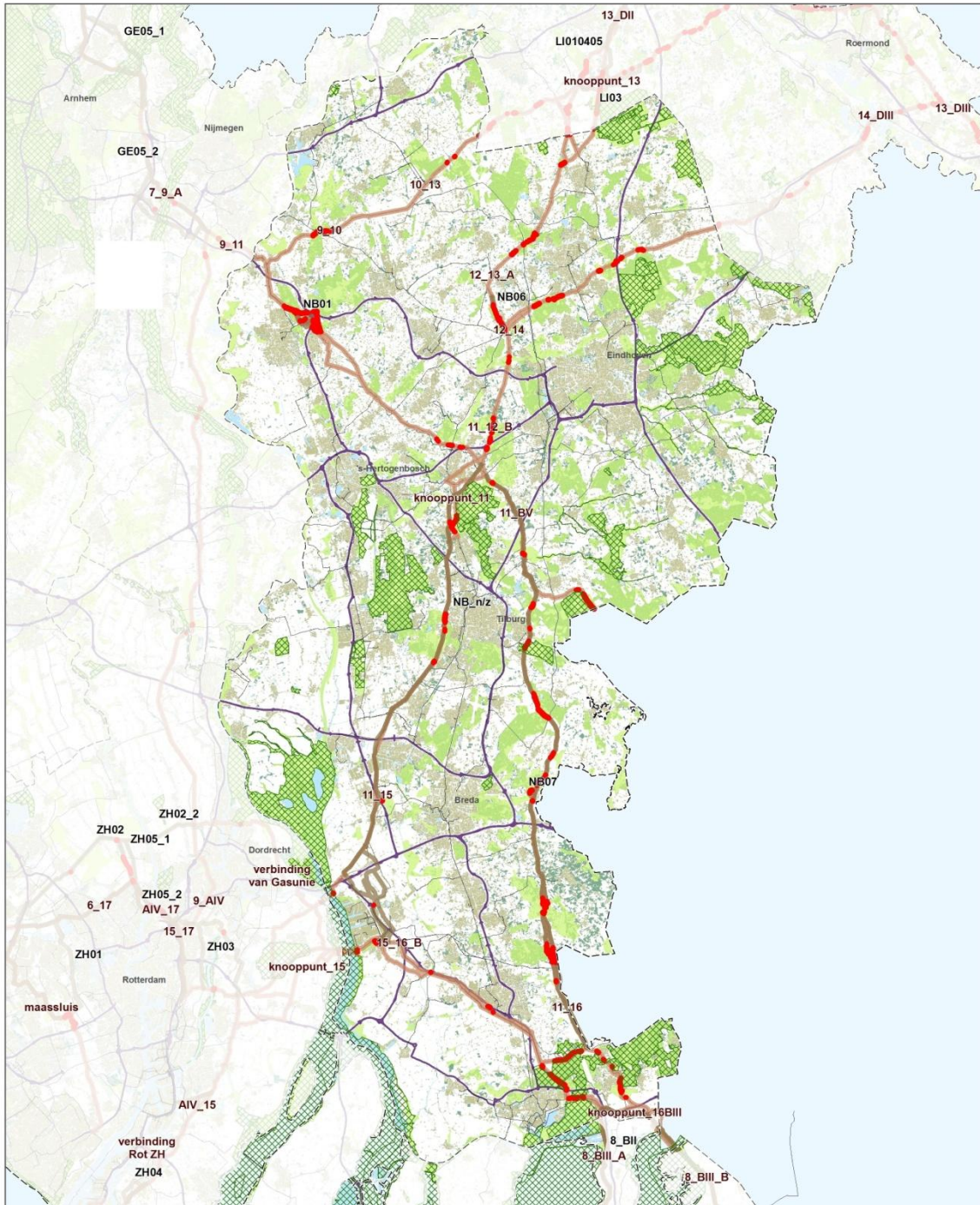


MER Structuurvisie
Buisleidingen
Doorsnijding bos in EHS, Zeeland



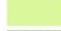






opdrachtgever:
 Ministerie van
 Infrastructuur en Milieu 

datum: 23-1-2012
 schaal (A3): 1:275 000
 0 2 4 6 8 Km

FN



Legenda

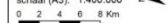
- | | | | |
|---|----------------------------|---|---------------------------------|
|  | Doorsnijding bos in EHS |  | Onderzochte varianten |
|  | Ecologische Hoofdstructuur |  | Buisleidingstroken Basisvariant |
|  | Natura 2000 |  | Bestaande aardgasleiding |
|  | Bos |  | Rijksweg |
| | |  | Provinciegrens |

**MER Structuurvisie
Buisleidingen**
*Doorsnijding bos in EHS,
Noord-Brabant*

opdrachtgever:
Ministerie van
Infrastructuur en Milieu





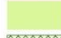






datum: 18-1-2012
schaal (A3): 1:400 000



FN



Legenda

	Doorsnijding bos in EHS		Onderzochte varianten
	Ecologische Hoofdstructuur		Buisleidingstroken Basisvariant
	Natura 2000		Bestaande aardgasleiding
	Bos		Rijksweg
			Provinciegrens



MER Structuurvisie Buisleidingen
Doorsnijding bos in EHS, Limburg

opdrachtgever:
 Ministerie van Infrastructuur en Milieu


 Infrastructuur Water Milieu Gebouwen

datum: 18-1-2012
 schaal (A3): 1:275.000





FN